

DIY TAMBOURINE

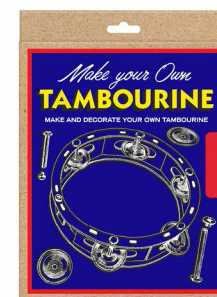
Get things shaking with your very own Tambourine! This DIY kit contains all the pieces for your instrument and features smooth, unfinished wood to paint and decorate as you like.

Materials: Plywood, metal, sandpaper

Package Dimensions:
7.4" x 10.3" x 0.7" / 19 x 26 x 2 cm

Product Dimensions:
1.5" x 6.6" dia. / 4 cm x 17 cm dia.

Packaging: Kraft box



MAKE YOUR OWN TAMBOURINE

- FR** FABRIQUEZ VOTRE TAMBOURIN
- ES** FABRIQUE SU PROPIA PANDERETA
- DE** BAU DIR DEIN EIGENES TAMBURIN
- IT** TAMBURELLO FAI-DA-TE
- PT** FAÇA A SEU PRÓPRIA PANDEIRETA

EN INSTRUCTIONS

Carefully push out each piece from the board. Pay attention to left and right side of piece. Put all the parts together in order according to the diagrams. Sandpaper included for smoothing edges of pieces.

FR INSTRUCTIONS

Détachez avec précaution toutes les pièces de la plaque. Attention à distinguer le côté gauche du côté droit. Assemblez toutes les pièces conformément aux diagrammes. Papier de verre inclus pour polir les bouts.

ES INSTRUCCIONES

Saque cada pieza del tablero con cuidado. Preste atención al lado izquierdo y derecho de la pieza. Junte todas las partes en orden según los diagramas. Papel de lija incluido para alisar los bordes de las piezas.

DE ANLEITUNG

Vorsichtig jedes Teil von der Platte entfernen. Dabei linke und rechte Seite der Teile beachten. Alle Teile gemäß den Diagrammen wieder zusammenfügen. Inkl. Schmirgelpapier zum Glätten der Teilekanten.




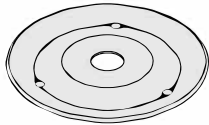
IT ISTRUZIONI

Rimuovi con cautela ogni pezzo dalla scatola. Presta attenzione al lato sinistro e destro del pezzo. Metti insieme tutte le parti in ordine secondo gli schemi. Carta vetrata inclusa per smussare i bordi dei pezzi.

PT INSTRUÇÕES

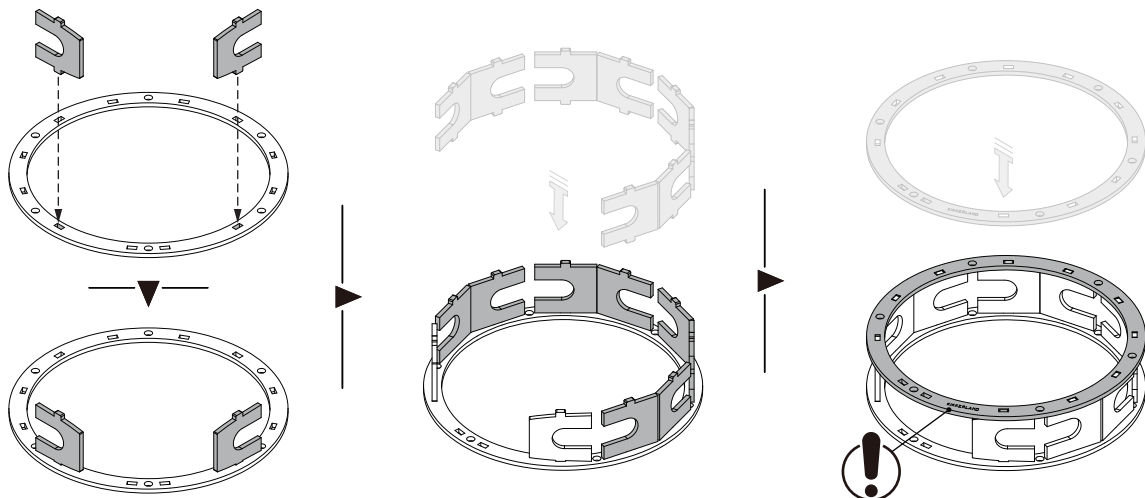
Pressionar cuidadosamente cada peça para fora da placa. Prestar atenção ao lado esquerdo e ao direito da peça. Colocar todas as peças pela ordem indicada nos esquemas. Lixa incluída para alisar os rebordos das peças.

Parts List

Item	RIVET (LONG)	RIVET (SHORT)	SCREW	JINGLES
Number	P1	P2	P3	P4
Illustration	 40mm	 30mm		
Quantity	5	1	7	10

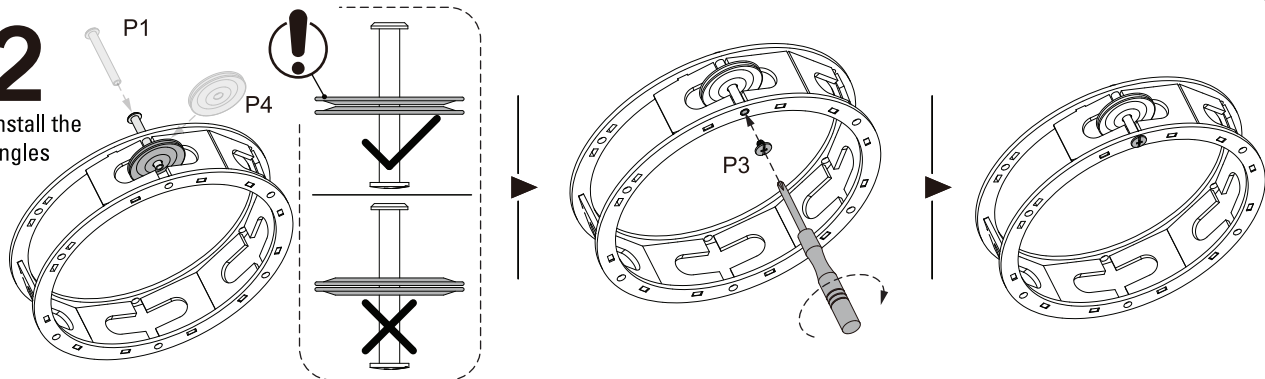
1

Assemble frame

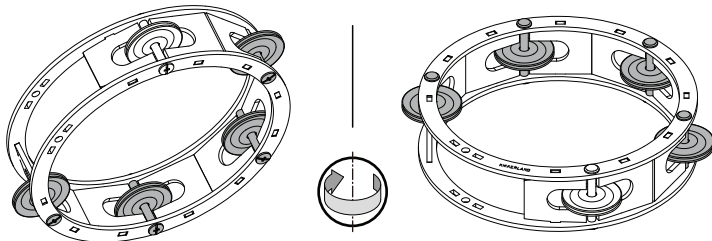


2

Install the jingles

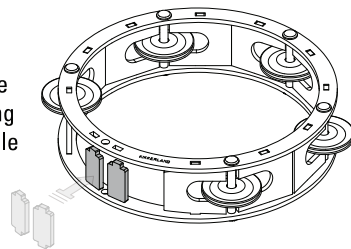


Install the other 4 pairs of jingles



3

Complete by making the handle



P2

